



**Question 2:** [5]

Fill in the missing words.

- 2.1 The ears of wheat on the S.A. Coat of Arms are emblems of the \_\_\_\_\_ of the land. (1)
- 2.2 Heritage day is a celebration of our country's \_\_\_\_\_ people. (1)
- 2.3 \_\_\_\_\_ is when people think that people will behave in a certain way or will be able to do certain things because they are male or female. (1)
- 2.4 In order for human beings to live peacefully together, people need to be \_\_\_\_\_ of each other's differences. (1)
- 2.5 National symbols are things like places, objects, activities or people that are \_\_\_\_\_ to a particular nation. (1)

**Question 3:** [5]

In each of the following statements there is ONE incorrect word. Highlight the incorrect word, then re-write the statement with the correct word.

- 3.1 The Animal Anti-Cremation League has been protecting and caring for animals since 1956. (1)

---



---

- 3.2 Sexism means hurting someone physically, mentally or emotionally. (1)

---



---

- 3.3 Nation-building is a term used to describe the process of creating a national common prosperity. (1)

---



---

- 3.4 The Coat of Arms was adopted on Freedom Day. (1)

---



---

- 3.5 The first democratic elections in South Africa took part on 27 April 1994, this date marks the official end of colonialism in South Africa. (1)

---



---

**Section B:**

**Question 4:** **[3]**

Give definitions of the following:

4.1 Ubuntu: (1)

---

---

4.2 Family Heritage: (1)

---

---

4.3 Abolished: (1)

---

---

**Question 5:** **[5]**



The first Arbor Day took place on April 10, 1872.

Why, do you think, is Arbor Day important?

---

---

---

---

---

---

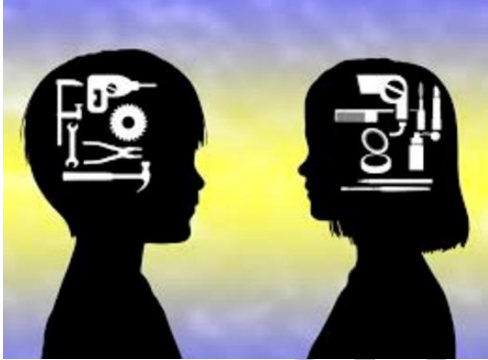
---

---

Question 6:

[3]

**“Boxes are for objects,  
Not humans.”**  
- Abhijit Reichs



Looking at the picture and the above quote, explain, what you think, it means:

---

---

---

---

---

---

---

---

---

---

Question 7:

[4]

Look at the cartoon and answer the questions that follow.



7.1 Is it an example of positive or negative communication?

(1)

---

---

7.2 Give a reason for your answer to question 7.1. (1)

---

---

7.3 What do you think the mom and the child should have done differently in the above scenario? (2)

Mom:

---

---

Child:

---

---

TOM NEWBY SCHOOL

Grade 6 PSW  
Performance Analysis  
 (For Teacher use only)

Name: \_\_\_\_\_ Grade 6: \_\_\_\_\_

<b>Question</b>	<b>1</b>	<b>2</b>	<b>3</b>	<b>4</b>	<b>5</b>	<b>6</b>	<b>7</b>
Possible Mark	5	5	5	3	5	3	4
Achieved Mark							
Moderated mark							

TOM NEWBY SCHOOL