



Subject	Geography	Examiner	Miss Ratering
Date	June 2021	Total marks	40 marks
Grade	6	Duration	1 hour
		Moderator	Miss Botha
Special instructions/ Equipment	Write as many details as possible. Read and answer ALL questions thoroughly. Write neatly and legibly in blue pen. Good luck! Think before you INK! Write all answers on the answer sheet.		
This assessment has been compiled using notes and information contained in the Tom Newby School resource material. The marking memorandum has been compiled accordingly. While alternative responses will be given due acknowledgement, the official memorandum will be considered a priority document to ensure uniformity of marking.			

Name: _____ Class: _____

Instructions:

1. This paper consists of FIVE questions.
2. Answer all questions on the question sheet.
3. Take note of the mark allocation per question.
4. Read carefully and answer all the questions neatly and legibly.
5. Good luck.

Question 1**[5]**

Match column A to column B. Write only the letter of the answer you have chosen in the answer table provided.

Example: 1.1 A

	Column A		Column B
1.2	Equator	A.	40°N 20°E
1.2	0° 0°	B.	Map representation of real life distances.
1.3	International date line	C.	Coordinates that meet in the sea.
1.4	Scale	D.	A line of latitude.
1.5	Coordinates	E.	Only crooked line of longitude.

Answer table

1.1 _____	1.2 _____	1.3 _____	1.4 _____	1.5 _____
-----------	-----------	-----------	-----------	-----------

Question 2**[6]**

Say whether the following statements are true or false. If false, correct the statement.

If the scale given on a map is 1cm: 100 km:

2.1 It means 1cm on the map is 100 km in reality. _____

2.2 It means ½ cm on the map represents 50km in reality. _____

2.3 5½ cm on the map would be 500½ km in reality. _____

2.4 Scale can be given as a line scale or a number scale. _____

Question 3**[4]**

Multiple choice. Write down only the letter of the answer that you have chosen on the answer table provided. Example: 3.1 D

3.1 The Antarctic Circle lies at:

(1)

- A. 66°S
- B. 66,5°S
- C. 23,5°S
- D. 66,5°N

3.2 40°N 0° is found:

(1)

- A. nowhere

- B. on the equator
- C. on the Greenwich Meridian
- D. everywhere on the 40°N line

3.3 More people live in the northern hemisphere because: (1)

- A. it's much prettier there
- B. it's warmer
- C. there's more land
- D. there's more air and food

3.4 Asia and Australia are the: (1)

- A. largest and smallest continents
- B. second largest and smallest
- C. largest and second smallest
- D. equal in size

Answer table

3.1 _____	3.2 _____	3.3 _____	3.4 _____
-----------	-----------	-----------	-----------

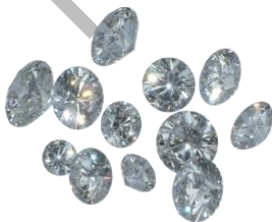
Question 4 [20]

Write a good, short answer for each of the following:

4.1 List 3 good reasons why people trade.

(3)

4.2 Decide whether each of these items is imported or exported. Write import or export under each item.



(3)

4.3 List 4 manufactured products that this raw material could be used to produce.



(2)

4.4 Name 2 things that you can be sure of if you buy an item with this logo on it.



(2)

4.5 In addition to products (things), skills and services can also be traded.

Give an example of each.

Product: _____

Skills: _____

Services: _____ (3)

4.6 Explain what fair trade is. _____

(2)

4.7 If you owned a company, would it be a good idea to belong to Fairtrade or not?

Give 2 reasons why/why not. _____

(2)

4.8 Manufacturing chocolate.

(3)

Match the picture to the description. Write the letter of the answer that you have chosen on the answer table provided. Example: 1 H

1.



2.



3.



4.



5.



6.



7.



8.



9.



10.



A. Beans are crushed and the outer shell is removed.

B. The beans are spread out in the sun to dry.

C. The pods are harvested- white cocoa beans.

D. The beans are transported by train or lorry.

E. The beans are roasted.

F. Inner part pressed- liquid chocolate produced.

G. The beans are fermented.

H. The beans are put in large sacks.

I. The beans are taken to the factory.

J. Ripe pods on a cocoa tree growing in South America, Africa or Indonesia.

1. ____	2. ____	3. ____	4. ____	5. ____	6. ____	7. ____	8. ____	9. ____	10. ____
---------	---------	---------	---------	---------	---------	---------	---------	---------	----------

Question 5**[5]**

5.1 Using the case study of a Fairtrade company in Ghana, use the information to write a paragraph, using the following guidelines:

Introduction:

What hardships were the cocoa farmers going through before Kuapa Kokoo was formed.

Body:

What does Kuapa Kokoo mean?

Why was the company formed?

What are the advantages of belonging to the company?

Conclusion:

1 or 2 Sentences stating what the farmers spend their extra money on.

Case Study**Kuapa Kokoo: A Success Story of Fair Trade**

A map of Africa with Ghana highlighted.

Most of the cocoa beans grown in Ghana are sent to the United Kingdom and other countries in Europe where they are made into chocolate. The price farmers receive for their cocoa beans is often very low and few of them can afford to buy chocolate.

In the past, farmers used to have to sell their cocoa to the Ghanaian government. They were often cheated and earned very little money for all their hard work. Cocoa farmers in the same situation decided to get together and form their own company.

Grade 6 Geography Exam
June 2021
Performance Analysis

Name: _____ Class: _____

For teacher use only:

Question	1	2	3	4	5
Possible mark	5	6	4	20	5
Learner's mark					
Moderated mark					

Possible total	40
Learner's total	
Moderated total	