



**TOM NEWBY SCHOOL**  
**TERM 2 JUNE 2021**



1

<b>Subject</b>	<b>NS/TECH</b>	<b>Examiner</b>	<b>MS M MPESU</b>
<b>Date</b>	<b>JUNE 2021</b>	<b>Total marks</b>	<b>40</b>
<b>Term</b>	<b>2</b>	<b>Duration</b>	<b>1 HOUR</b>
<b>Grade</b>	<b>4</b>	<b>Moderator</b>	<b>MRS M FOURIE</b>
<b>Instructions</b>	<b>1. Read each question carefully before answering.</b> <b>2. Answer all questions neatly.</b>		

This assessment has been compiled using notes and information contained in the Tom Newby School resource material. The marking memorandum has been compiled accordingly. While alternative responses will be given due acknowledgement, the official memorandum will be considered a priority document to ensure uniformity of marking.

Name:	
Surname:	
Class:	

40
----

**SECTION A: LIFE AND LIVING [20]**

**QUESTION 1: Multiple Choice (5)**

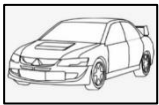
**Circle the correct answer**

- 1.1 The main function of the fins of a fish is to help it to .... (1)
- a) breathe
  - b) reproduce
  - c) see
  - d) move
- 1.2 Which term is an example of a life process? (1)
- a) evaporation
  - b) movement
  - c) germination
  - d) hibernate
- 1.3 Select the correct order of a seed germination (1)
- a) Young plant → seed → adult plant
  - b) Seed → adult plant → young plant
  - c) Adult plant → young plant → seed
  - d) Seed → young plant → adult plant

- 1.4 What do plants need to grow? (1)
- Water, air and sunlight
  - Air, rocks and sunlight
  - Food, soil and rocks
  - Soil, water and food
- 1.5 Which of the following animals uses its tail to warn attackers? (1)
- Rattlesnake
  - Bush baby
  - Monkeys
  - Shark

### **QUESTION 2** (7)

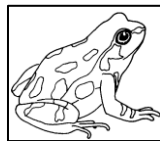
- 2.1 Sort the six objects below into living and non-living things. (6)



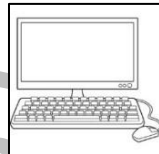
Car



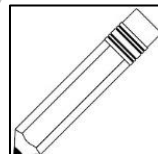
Tree



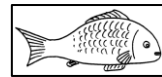
Frog



Computer



Pencil



Fish

LIVING	NON-LIVING

- 2.2 Name one object that looks non-living but can show characteristics of a living thing if given the right conditions \_\_\_\_\_ (1)

### **QUESTION 3** (3)

You live in a small town. You have been given 2 hens and cockerel by your uncle and aunt. They tell you to build a chicken coop for them. Fill in the missing steps of a design process you are going to use to design and build the chicken coop.

Identify the problem

4.1 \_\_\_\_\_

Design brief

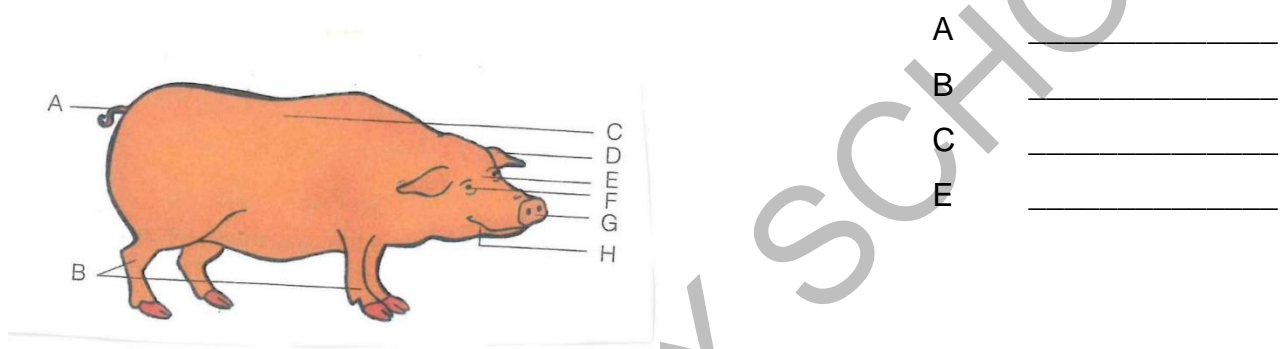
4.2 \_\_\_\_\_

Test. Evaluate and modify

4.3 \_\_\_\_\_

**QUESTION 4 (5)**

Label the parts of the animal shown by the following letters



Name one collective name for D, F, G and H \_\_\_\_\_

**SECTION B: MATTER AND MATERIALS [14]**

**QUESTION 5 (5)**

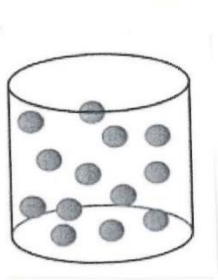
Look at the objects below. Decide if they are solids, liquids or gases. Place a (✓) in the correct column.



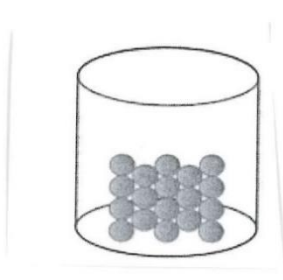
	SOLID	LIQUID	GAS
Water from the tap			
Steam from a kettle			
A chair			
Juice in the cup			
Lego block			

**QUESTION 6 (6)**

6.1 Look at the diagrams below and identify each state of matter according to how close the molecules are to each other.



A \_\_\_\_\_



B \_\_\_\_\_



C \_\_\_\_\_

6.2 Choose the correct word to complete the following definitions:

Melting	Condensing	Freezing	Evaporation
---------	------------	----------	-------------

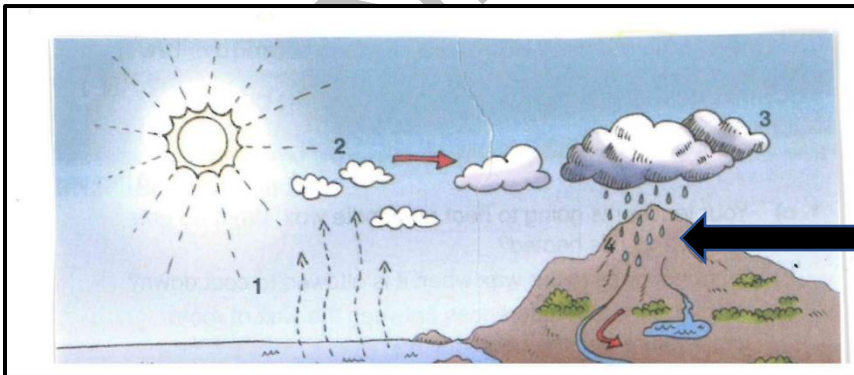
A \_\_\_\_\_ is when water vapour turns to liquid

B \_\_\_\_\_ is when liquid water turns to ice

C \_\_\_\_\_ is when ice water turns to liquid water

**QUESTION 7 (3)**

Look at the picture of a water cycle. The arrow shows precipitation.



What are the 3 forms of precipitation?

A \_\_\_\_\_

B \_\_\_\_\_

C \_\_\_\_\_

**SECTION C: STRUCTURES [6]****QUESTION 8**

8.1 Explain the difference between a frame and a shell structure.

a) Frame structure \_\_\_\_\_

\_\_\_\_\_

b) Shell structure \_\_\_\_\_

\_\_\_\_\_

8.2 Raw and manufactured materials are chosen to make objects according to their suitability. Which material would be the best suitable for the following objects? Give a reason for you answer.

a) Toilet window

\_\_\_\_\_

b) Raincoat

\_\_\_\_\_

c) A chair

\_\_\_\_\_

d) Hose pipe

\_\_\_\_\_

**TOTAL: 40**

**Grade 4 NS Tech June Test 2021**

**Performance Analysis**

(For teacher use only)

Name and Surname: \_\_\_\_\_ Class: \_\_\_\_\_

	<b>Section A</b>			
<b>Question number</b>	<b>1</b>	<b>2</b>	<b>3</b>	<b>4</b>
Possible Mark	5	7	5	3
Learner Mark				

	<b>Section B</b>		
<b>Question number</b>	<b>5</b>	<b>6</b>	<b>7</b>
Possible Mark	5	6	3
Learner Mark			

	<b>Section C</b>
<b>Question number</b>	<b>8</b>
Possible Mark	6
Learner Mark	

TOM NEWBY SCHOOL